

## Changing your CLiKAPAD v3 Base to use a Virtual Comm Port

NOTE: Check that there is a sticker on the bottom of your base which says v3.x (x = any number) before proceeding – these drivers will ONLY work with this base.

Also note – the virtual comm port drivers are **not** certified by Microsoft, so some users may have problems installing them depending on local system settings from your IT department.

If in doubt please contact CLiKAPAD support using support@clikapad.com

**IMPORTANT:** You must have installed the MS WHQL Certified driver provided from your software supplier and the CLiKAPAD Base Station must appear in your list of devices in device manager. There must be no cross, question mark, or exclamation mark showing on the device.

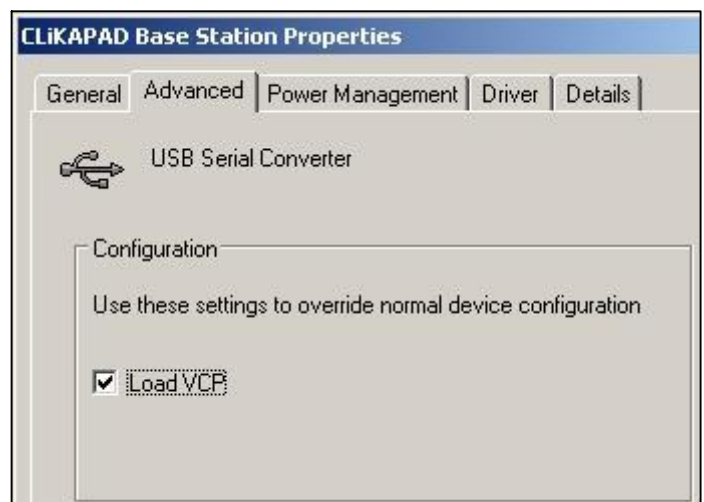
Device manager can be accessed either via control panel, system, then click on the button that says device manager on the hardware tab, or alternatively choose the start button, then run. Type in the following - %windir%\system32\devmgmt.msc - then press enter.

- 1 Make sure your Base Station is connected to the computer
- 2 In device manager, right click on the CLiKAPAD Base Station (you will find this listed under Universal Serial Bus Controllers)



If you can not see it you may either not have the base installed properly or may not be plugged in properly.

- 3 In the CLiKAPAD Base Station properties, choose the advanced tab and put a tick in Load VCP
- 4 Disconnect your CLiKAPAD Base Station from the computer
- 5 Reconnect your CLiKAPAD Base Station to the computer
- 6 The virtual serial port will now be detected and you should see a help bubble in the bottom right saying that it is installing new hardware and the Windows new hardware wizard should start.



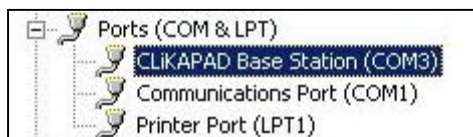
- 7 When prompted to allow Windows to search Windows Update – choose "No, not this time"
- 8 When asked what you want the wizard to do? – choose "Install from a list or specific location (Advanced)"
- 9 Now you will have to tell it where you have unzipped the drivers to – for example C:\CLiKAPAD\_v3\_VCP\_2K\_XP
- 10 You will probably get the windows warning saying that these drivers have not passed Windows Logo Testing – click Continue Anyway

- 11 Windows will now copy some files and you should receive a message as follows;



Click the Finish button to complete installation

- 12 If you check in device manager now you should have a new Port;



If it does not appear, you may need to unplug and then plug your Base Station again.

## Changing your CLIKAPAD v3 Base Back to a Direct Device

- 1 Make sure your Base Station is connected to the computer

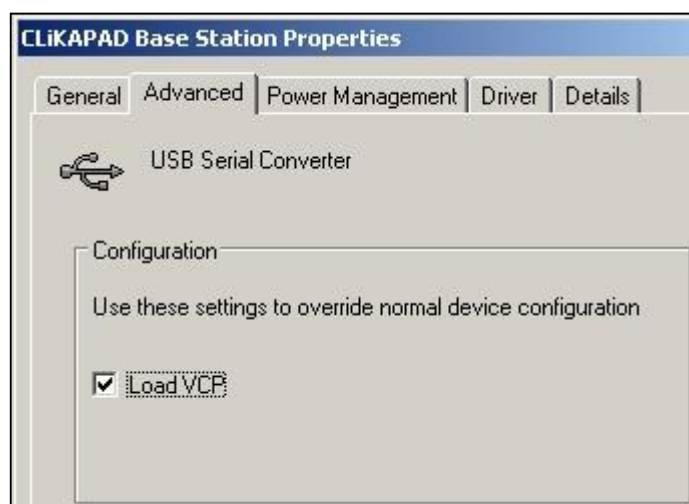
- 2 In device manager, right click on the CLIKAPAD Base Station (you will find this listed under Universal Serial Bus Controllers)

If you can not see it you may either not have the base installed properly or may not be plugged in properly.

- 3 In the CLIKAPAD Base Station properties, choose the advanced tab and remove the tick from "Load VCP"

- 4 Disconnect your CLIKAPAD Base Station from the computer

- 5 Reconnect your CLIKAPAD Base Station to the computer



If you check in device manager now, you should only see the CLIKAPAD Base Station listed under Universal Serial Bus devices, it will no longer be listed under Ports.